


**GENERAL TOOLS**

PH: (08) 8262 6199 FAX: (08) 8262 6044

email: generaltools@bigpond.com website: www.generaltools.com.au

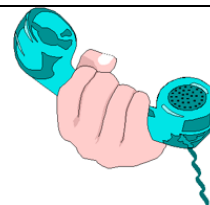

**SLOTDRILLS**
**Centre Cutting HSSCo**
**SHORT SERIES THREADED SHANK**
**FRACTIONAL**

| SIZE   | SHANK | O/ALL   | FLUTE   | PART NO.   |
|--------|-------|---------|---------|------------|
| 1/16   | 1/4   | 2       | 3/32    | SLOT1/16   |
| 3/32   | 1/4   | 2       | 5/32    | SLOT3/32   |
| 1/8*   | 1/4   | 2       | 3/16    | SLOT1/8    |
| 5/32*  | 1/4   | 2-1/16  | 1/4     | SLOT5/32   |
| 3/16*  | 1/4   | 2-1/8   | 9/32    | SLOT3/16   |
| 7/32   | 1/4   | 2-3/16  | 11/32   | SLOT7/32   |
| 1/4*   | 1/4   | 2-1/8   | 3/8     | SLOT1/4    |
| 9/32   | 3/8   | 2-5/16  | 7/16    | SLOT9/32   |
| 5/16*  | 3/8   | 2-5/16  | 1/2     | SLOT5/16   |
| 11/32  | 3/8   | 2-3/8   | 9/16    | SLOT11/32  |
| 3/8*   | 3/8   | 2-3/8   | 9/16    | SLOT3/8    |
| 7/16   | 1/2   | 2-9/16  | 11/16   | SLOT7/16   |
| 1/2*   | 1/2   | 2-5/8   | 3/4     | SLOT1/2    |
| 9/16*  | 1/2   | 2-11/16 | 7/8     | SLOT9/16   |
| 5/8*   | 5/8   | 2-13/16 | 7/8     | SLOT5/8    |
| 11/16  | 5/8   | 2-7/8   | 15/16   | SLOT11/16  |
| 3/4*   | 5/8   | 3       | 1       | SLOT3/4    |
| 13/16  | 1     | 3-7/8   | 1       | SLOT13/16  |
| 7/8    | 1     | 3-15/16 | 1       | SLOT7/8    |
| 15/16  | 1     | 4-1/32  | 1-1/32  | SLOT15/16  |
| 1      | 1     | 4       | 1-1/16  | SLOT1IN    |
| 1-1/8  | 1     | 3-3/4   | 1-3/16  | SLOT1-1/8  |
| 1-1/16 | 1     | 4-1/32  | 1-1/32  | SLOT1-1/16 |
| 1-1/4  | 1     | 4       | 1-1/2   | SLOT1-1/4  |
| 1-3/8  | 1     | 4-1/16  | 1-9/16  | SLOT1-3/8  |
| 1-1/2  | 1     | 4-3/16  | 1-11/16 | SLOT1-1/2  |
| 1-5/8  | 1     | 4-7/16  | 1-7/8   | SLOT1-5/8  |
| 1-3/4  | 1     | 4-9/16  | 2       | SLOT1-3/4  |
| 2      | 1     | 4-13/16 | 2-1/4   | SLOT2IN    |
| 1-1/2  | 1-1/4 | 4-1/2   | 1-11/16 | SLOT1-1/2B |
| 1-3/4  | 1-1/4 | 4-11/16 | 1-7/8   | SLOT1-3/4B |
| 2      | 1-1/4 | 4-5/8   | 2       | SLOT2INB   |

\* Denotes available tinito coated.

**LONG SERIES THREADED SHANK**
**FRACTIONAL**

| SIZE  | SHANK | O/ALL | FLUTE | PART NO.    |
|-------|-------|-------|-------|-------------|
| 1/16  | 1/4   | 2     | 3/16  | LSLOT1/16   |
| 3/32  | 1/4   | 2     | 1/4   | LSLOT3/32   |
| 1/8*  | 1/4   | 2-1/2 | 7/16  | LSLOT1/8    |
| 5/32* | 1/4   | 2-3/4 | 1/2   | LSLOT5/32   |
| 3/16* | 1/4   | 2-3/4 | 1/2   | LSLOT3/16   |
| 7/32  | 1/4   | 3     | 5/8   | LSLOT7/32   |
| 1/4*  | 1/4   | 3     | 5/8   | LSLOT1/4    |
| 9/32  | 3/8   | 3-1/8 | 3/4   | LSLOT9/32   |
| 5/16* | 3/8   | 3-1/8 | 3/4   | LSLOT5/16   |
| 3/8*  | 3/8   | 3-1/4 | 7/8   | LSLOT3/8    |
| 7/16  | 1/2   | 3-1/2 | 7/8   | LSLOT7/16   |
| 1/2*  | 1/2   | 3-3/4 | 1     | LSLOT1/2    |
| 9/16  | 1/2   | 4     | 1-1/8 | LSLOT9/16   |
| 5/8*  | 5/8   | 4-1/4 | 1-1/4 | LSLOT5/8    |
| 11/16 | 5/8   | 4-1/2 | 1-3/8 | LSLOT11/16  |
| 3/4*  | 5/8   | 4-3/4 | 1-1/2 | LSLOT3/4    |
| 13/16 | 1     | 5-3/4 | 1-1/2 | LSLOT13/16  |
| 7/8   | 1     | 5-3/4 | 1-5/8 | LSLOT7/8    |
| 1     | 1     | 6-1/4 | 1-3/4 | LSLOT1IN    |
| 1-1/8 | 1     | 6-1/4 | 1-7/8 | LSLOT1-1/8  |
| 1-1/4 | 1     | 6-1/4 | 2     | LSLOT1-1/4  |
| 1-3/8 | 1     | 6-1/4 | 2-1/8 | LSLOT1-3/8  |
| 1-1/2 | 1     | 6-1/4 | 2-1/4 | LSLOT1-1/2  |
| 1-5/8 | 1     | 6-1/4 | 2-1/2 | LSLOT1-5/8  |
| 1-3/4 | 1     | 6-1/4 | 2-1/2 | LSLOT1-3/4  |
| 2     | 1     | 6-1/4 | 2-1/2 | LSLOT2IN    |
| 1-1/2 | 1-1/4 | 6-1/4 | 2-1/4 | LSLOT1-1/2B |
| 1-3/4 | 1-1/4 | 6-1/4 | 2-1/2 | LSLOT1-3/4B |
| 2     | 1-1/4 | 6-1/4 | 2-1/2 | LSLOT2INB   |


**IF YOU DON'T SEE WHAT YOU WANT  
JUST CALL US!**
**GENERAL TOOLS ARE PROUD STOCKISTS OF**

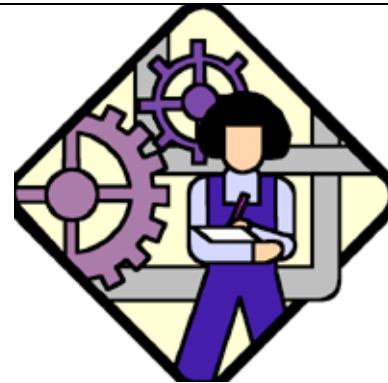

**SLOTDRILLS****Centre Cutting HSSCo****SHORT SERIES THREADED SHANK  
METRIC**

| SIZE | SHANK | O/ALL | FLUTE | PART NO. |
|------|-------|-------|-------|----------|
| 2*   | 6     | 49    | 3     | SLOT2    |
| 2.5  | 6     | 51    | 4.5   | SLOT2.5  |
| 3*   | 6     | 51    | 7.5   | SLOT3    |
| 3.5  | 6     | 52.5  | 7.5   | SLOT3.5  |
| 4*   | 6     | 52.5  | 9.5   | SLOT4    |
| 4.5  | 6     | 52.5  | 9.5   | SLOT4.5  |
| 5*   | 6     | 52.5  | 9.5   | SLOT5    |
| 5.5  | 6     | 55.5  | 11    | SLOT5.5  |
| 6*   | 6     | 56.5  | 11    | SLOT6    |
| 6.5  | 10    | 58.5  | 11    | SLOT6.5  |
| 7    | 10    | 59.5  | 11    | SLOT7    |
| 7.5  | 10    | 58.5  | 11    | SLOT7.5  |
| 8*   | 10    | 59.5  | 12.5  | SLOT8    |
| 8.5  | 10    | 60.5  | 14.5  | SLOT8.5  |
| 9    | 10    | 60.5  | 14    | SLOT9    |
| 9.5  | 10    | 60.5  | 14.5  | SLOT9.5  |
| 10*  | 10    | 60.5  | 14.5  | SLOT10   |
| 10.5 | 12    | 65    | 17.5  | SLOT10.5 |
| 11   | 12    | 66.5  | 17.5  | SLOT11   |
| 12*  | 12    | 66.5  | 19    | SLOT12   |
| 13   | 12    | 68.5  | 19    | SLOT13   |
| 14*  | 12    | 68.5  | 22    | SLOT14   |
| 15   | 16    | 72    | 22    | SLOT15   |
| 16*  | 16    | 72    | 22    | SLOT16   |
| 17   | 16    | 74    | 24    | SLOT17   |
| 18*  | 16    | 74    | 24    | SLOT18   |
| 19   | 16    | 77    | 25.5  | SLOT19   |
| 20*  | 16    | 77    | 25.5  | SLOT20   |
| 21   | 25    | 98.5  | 25.5  | SLOT21   |
| 22   | 25    | 100   | 25.5  | SLOT22   |
| 23   | 25    | 101.5 | 25.5  | SLOT23   |
| 24   | 25    | 103   | 25.5  | SLOT24   |
| 25   | 25    | 101   | 27    | SLOT25   |
| 26   | 25    | 95    | 30    | SLOT26   |
| 28   | 25    | 95    | 30    | SLOT28   |
| 30   | 25    | 93.5  | 30    | SLOT30   |
| 32   | 32    | 117.5 | 35    | SLOT32   |
| 36   | 32    | 111   | 39.5  | SLOT36   |
| 40   | 32    | 117   | 46    | SLOT40   |
| 45   | 32    | 119.5 | 47.5  | SLOT45   |
| 50   | 32    | 117.5 | 51    | SLOT50   |

\*Denotes available tinite coated.

**LONG SERIES THREADED SHANK  
METRIC**

| SIZE | SHANK | O/ALL | FLUTE | PART NO. |
|------|-------|-------|-------|----------|
| 2    | 6     | 51    | 4     | LSLOT2   |
| 3    | 6     | 60.5  | 11    | LSLOT3   |
| 4    | 6     | 66.5  | 12.5  | LSLOT4   |
| 5    | 6     | 70    | 12.5  | LSLOT5   |
| 6    | 6     | 76    | 16    | LSLOT6   |
| 7    | 10    | 76    | 16    | LSLOT7   |
| 8    | 10    | 79.5  | 19    | LSLOT8   |
| 9    | 10    | 82.5  | 22    | LSLOT9   |
| 10   | 10    | 82.5  | 22    | LSLOT10  |
| 11   | 12    | 89    | 22    | LSLOT11  |
| 12   | 12    | 95    | 25.5  | LSLOT12  |
| 13   | 12    | 95    | 25.5  | LSLOT13  |
| 14   | 12    | 105.5 | 28.5  | LSLOT14  |
| 15   | 16    | 108   | 31.5  | LSLOT15  |
| 16   | 16    | 108   | 31.5  | LSLOT16  |
| 17   | 16    | 114.5 | 35    | LSLOT17  |
| 18   | 16    | 114.5 | 35    | LSLOT18  |
| 19   | 16    | 120.5 | 38    | LSLOT19  |
| 20   | 16    | 120.5 | 38    | LSLOT20  |



**GENERAL TOOLS HAS BEEN  
SERVICING SOUTH  
AUSTRALIAN INDUSTRY FOR  
OVER 40 YEARS**

**GENERAL TOOLS ARE PROUD STOCKISTS OF**




**SOLID CARBIDE FIRE COATED  
SLOTDRILLS-SHORT. HELIX 30°**

| SIZE | SHANK | FLUTE | O/A | PART NO. |
|------|-------|-------|-----|----------|
| 2    | 6     | 6     | 57  | 5530-2   |
| 3    | 6     | 7     | 57  | 5530-3   |
| 4    | 6     | 8     | 57  | 5530-4   |
| 5    | 5     | 10    | 57  | 5530-5   |
| 6    | 6     | 10    | 57  | 5530-6   |
| 7    | 8     | 13    | 63  | 5530-7   |
| 8    | 8     | 16    | 63  | 5530-8   |
| 9    | 10    | 16    | 72  | 5530-9   |
| 10   | 10    | 19    | 72  | 5530-10  |
| 12   | 12    | 22    | 83  | 5530-12  |
| 14   | 14    | 22    | 83  | 5530-14  |
| 16   | 16    | 26    | 92  | 5530-16  |
| 18   | 18    | 26    | 92  | 5530-18  |
| 20   | 20    | 32    | 104 | 5530-20  |

**SOLID CARBIDE FIRE COATED  
SLOTDRILLS-LONG. HELIX 30°**

| SIZE | SHANK | FLUTE | O/A | PART NO. |
|------|-------|-------|-----|----------|
| 3    | 3     | 20    | 75  | 5530-3   |
| 4    | 4     | 25    | 75  | 5530-4   |
| 5    | 5     | 30    | 75  | 5530-5   |
| 6    | 6     | 30    | 75  | 5530-6   |
| 8    | 8     | 40    | 100 | 5530-8   |
| 10   | 10    | 40    | 100 | 5530-10  |
| 12   | 12    | 45    | 150 | 5530-12  |
| 14   | 14    | 45    | 150 | 5530-14  |
| 16   | 16    | 65    | 150 | 5530-16  |
| 18   | 18    | 65    | 150 | 5530-18  |
| 20   | 20    | 65    | 150 | 5530-20  |

**SOLID CARBIDE UNCOATED  
SLOTDRILLS-SHORT**

| SIZE | SHANK | FLUTE | O/A   | PART NO. |
|------|-------|-------|-------|----------|
| 1/16 | 1/8   | 3/16  | 1-1/2 | SDC1/16  |
| 3/32 | 1/8   | 9/32  | 1-1/2 | SDC3/32  |
| 1/8  | 1/8   | 1/2   | 1-1/2 | SDC1/8   |
| 5/32 | 3/16  | 1/2   | 2     | SDC5/32  |
| 3/16 | 3/16  | 5/8   | 2     | SDC3/16  |
| 1/4  | 1/4   | 3/4   | 2-1/2 | SDC1/4   |
| 5/16 | 5/16  | 13/16 | 2-1/2 | SDC5/16  |
| 3/8  | 3/8   | 1     | 2-1/2 | SDC3/8   |
| 7/16 | 7/16  | 1     | 2-3/4 | SDC7/16  |
| 1/2  | 1/2   | 1     | 3     | SDC1/2   |
| 5/8  | 5/8   | 1-1/4 | 3-1/2 | SDC5/8   |
| 3/4  | 3/4   | 1-1/2 | 4     | SDC3/4   |

**SOLID CARBIDE UNCOATED  
SLOTDRILLS-LONG**

| SIZE | SHANK | FLUTE | O/A   | PART NO. |
|------|-------|-------|-------|----------|
| 1/4  | 1/4   | 1-1/8 | 3     | SDC1/4L  |
| 5/16 | 5/16  | 1-1/8 | 3     | SDC5/16L |
| 3/8  | 3/8   | 1-1/8 | 3     | SDC3/8L  |
| 1/2  | 1/2   | 2     | 4-1/2 | SDC1/2L  |

**SOLID CARBIDE UNCOATED  
SLOTDRILLS-EXTRA LONG**

| SIZE | SHANK | FLUTE | O/A | PART NO. |
|------|-------|-------|-----|----------|
| 1/4  | 1/4   | 1-1/2 | 4   | SDC1/4E  |
| 5/16 | 5/16  | 1-5/8 | 4   | SDC5/16E |
| 3/8  | 3/8   | 1-3/4 | 4   | SDC3/8E  |
| 1/2  | 1/2   | 3     | 6   | SDC1/2E  |


 Special cutters for Aluminium & Plastics  
**SOLID CARBIDE K GRADE  
SLOTDRILLS-SHORT. HELIX 45°**

| SIZE | SHANK | FLUTE | O/A | PART NO. |
|------|-------|-------|-----|----------|
| 3    | 6     | 5     | 50  | 5542-3   |
| 4    | 6     | 8     | 50  | 5542-4   |
| 5    | 5     | 9     | 54  | 5542-5   |
| 6    | 6     | 10    | 54  | 5542-6   |
| 8    | 8     | 12    | 58  | 5542-8   |
| 10   | 10    | 14    | 66  | 5542-10  |
| 12   | 12    | 16    | 73  | 5542-12  |
| 14   | 14    | 18    | 75  | 5542-14  |
| 16   | 16    | 22    | 82  | 5542-16  |
| 18   | 18    | 24    | 84  | 5542-18  |
| 20   | 20    | 26    | 92  | 5542-20  |

**SOLID CARBIDE K GRADE  
SLOTDRILLS-LONG. HELIX 45°**

| SIZE | SHANK | FLUTE | O/A | PART NO. |
|------|-------|-------|-----|----------|
| 3    | 6     | 7     | 57  | 5543-3   |
| 4    | 6     | 8     | 57  | 5543-4   |
| 5    | 6     | 10    | 57  | 5543-5   |
| 6    | 6     | 10    | 57  | 5543-6   |
| 8    | 8     | 16    | 63  | 5543-8   |
| 10   | 10    | 19    | 72  | 5543-10  |
| 12   | 12    | 22    | 83  | 5543-12  |
| 14   | 14    | 22    | 83  | 5543-14  |
| 16   | 16    | 26    | 92  | 5543-16  |
| 18   | 18    | 26    | 92  | 5543-18  |
| 20   | 20    | 32    | 104 | 5543-20  |

# GUHRING